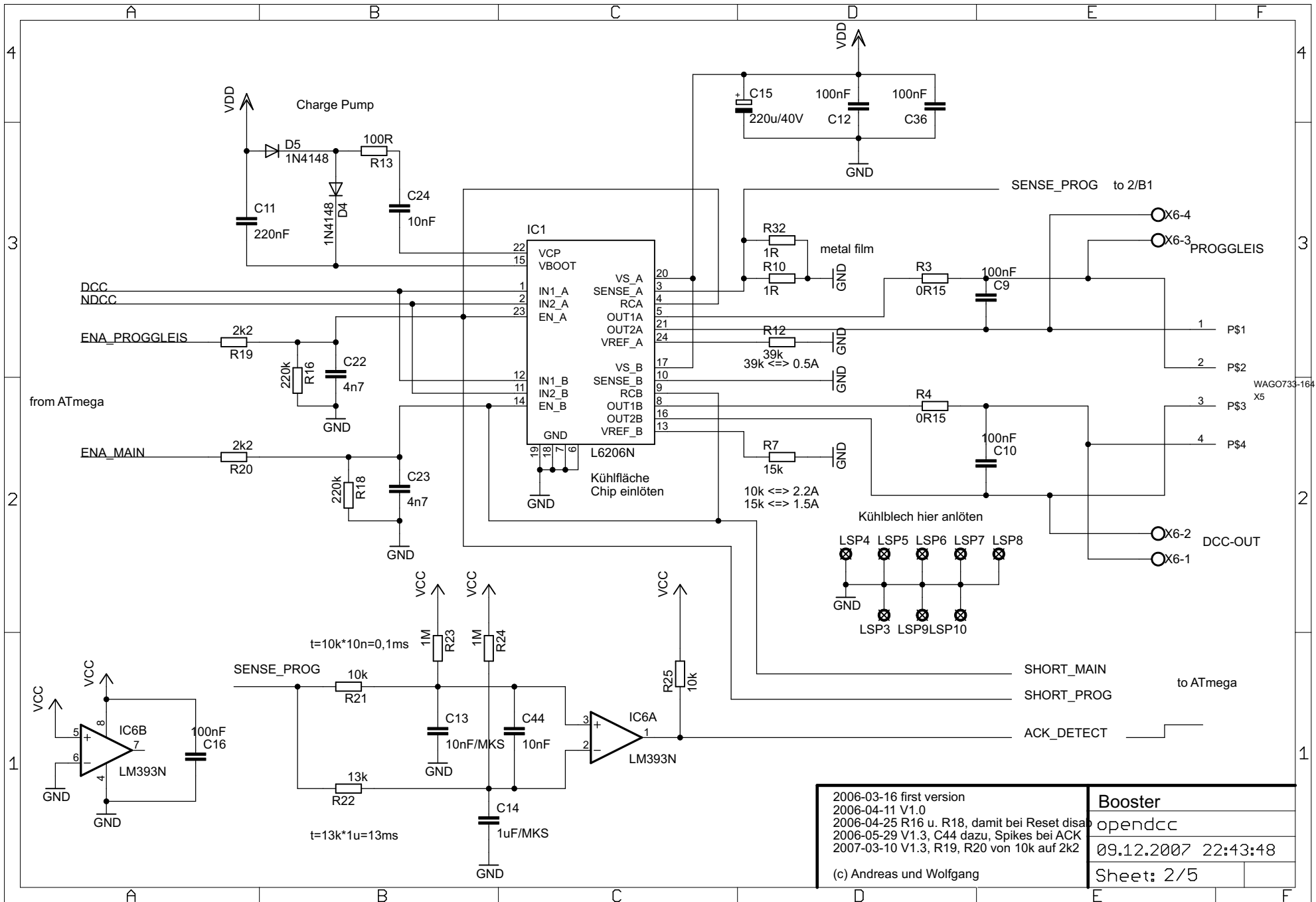


Mode:	IBOX	DMX	S88	td.
JP1		X		X
JP2			X	X

2006-04-11 V1.0
 2006-04-16 added CTS, RTS; USB-Support
 2006-04-23 V1.2 FT232RL Chip
 2006-04-25 Added ISP and Resetchip (n.f.)
 2006-05-15 Change C4-C5 -> 18pF
 2007-12-08 V1.4 Added Raildata + S88-N
 (c) Andreas Lang und Wolfgang Kufer

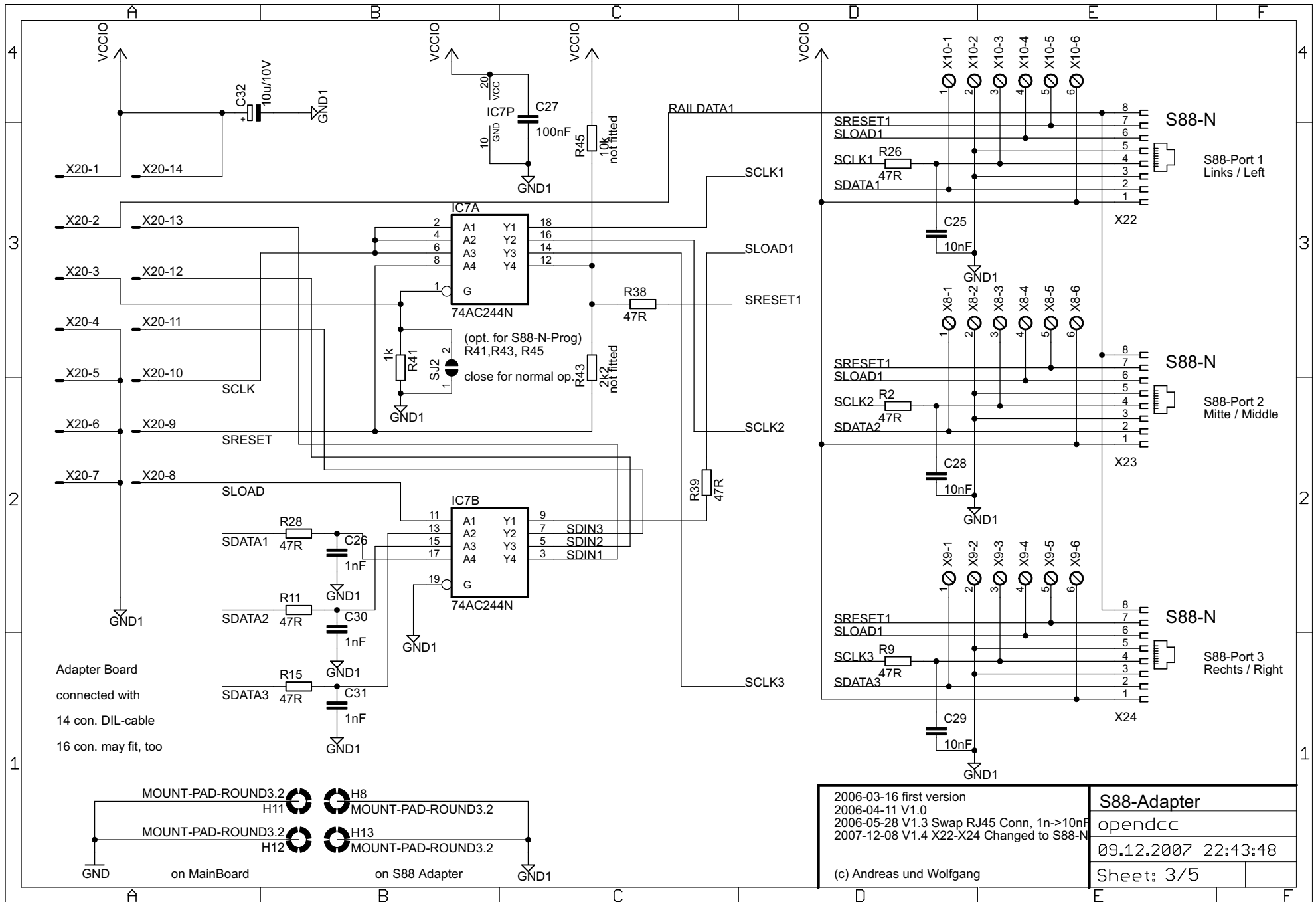
Prozessor
 opendcc
 09.12.2007 22:43:48
 Sheet: 1/5

see at www.lancos.com

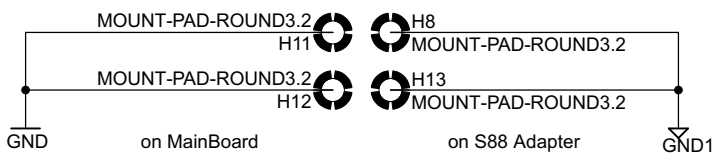


2006-03-16 first version 2006-04-11 V1.0 2006-04-25 R16 u. R18, damit bei Reset disa 2006-05-29 V1.3, C44 dazu, Spikes bei ACK 2007-03-10 V1.3, R19, R20 von 10k auf 2k2	Booster opendcc 09.12.2007 22:43:48 Sheet: 2/5
--	--

(c) Andreas und Wolfgang



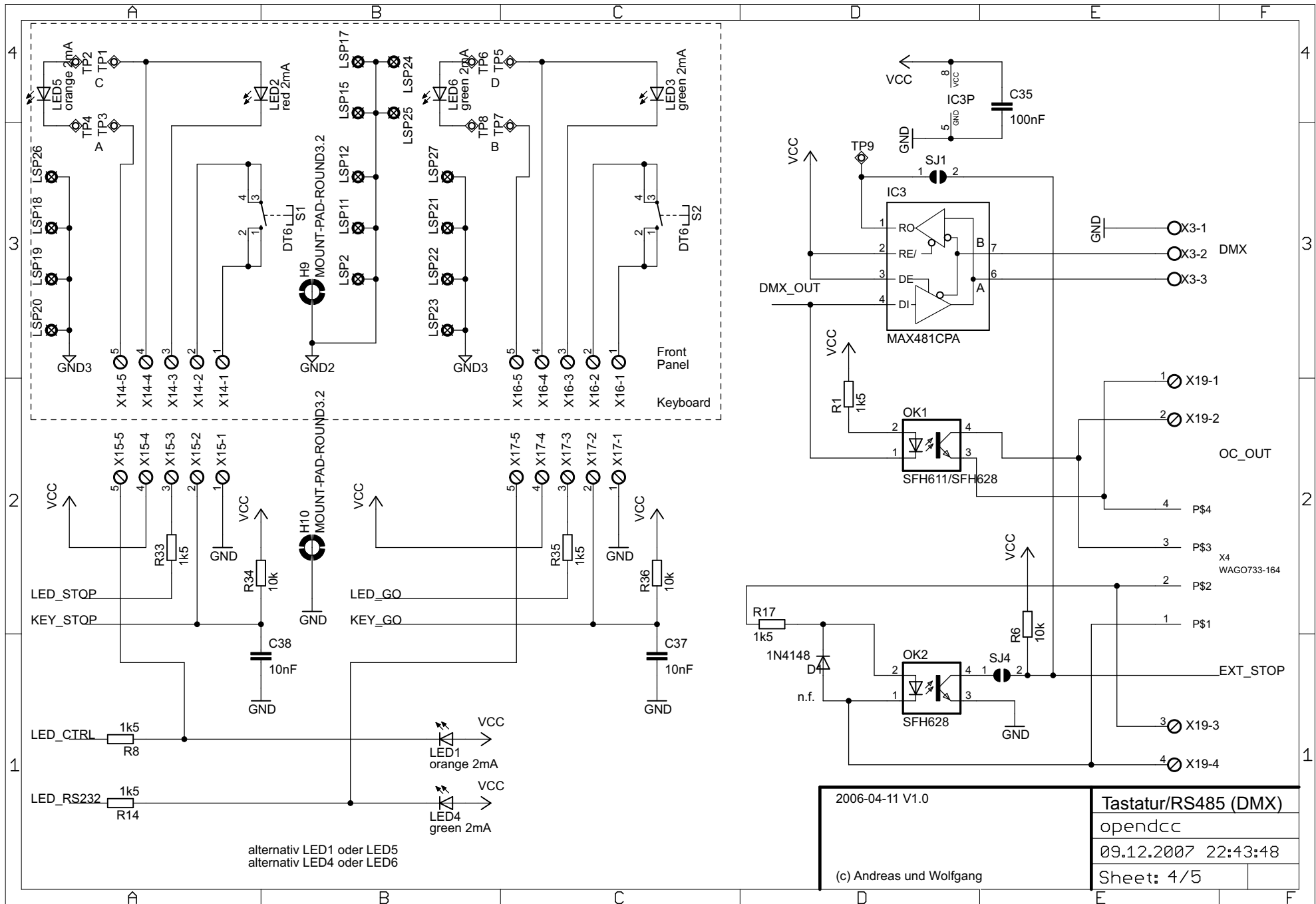
Adapter Board
connected with
14 con. DIL-cable
16 con. may fit, too

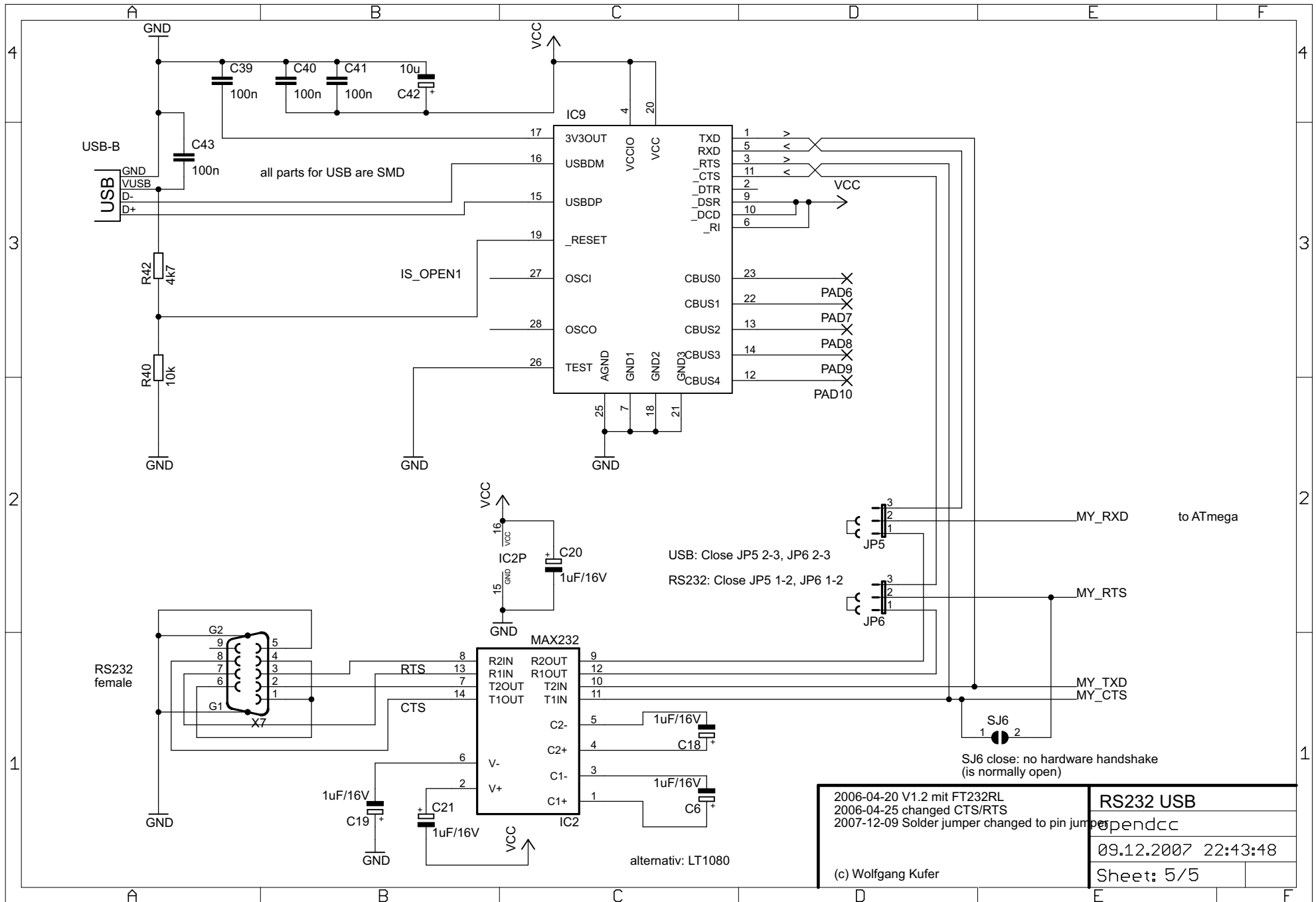


2006-03-16 first version
2006-04-11 V1.0
2006-05-28 V1.3 Swap RJ45 Conn, 1n->10nF
2007-12-08 V1.4 X22-X24 Changed to S88-N

(c) Andreas und Wolfgang

S88-Adapter	
opendcc	
09.12.2007 22:43:48	
Sheet: 3/5	





USB: Close JP5 2-3, JP6 2-3
 RS232: Close JP5 1-2, JP6 1-2

SJ6 close: no hardware handshake
 (is normally open)

2006-04-20 V1.2 mit FT232RL
 2006-04-25 changed CTS/RTS
 2007-12-09 Solder jumper changed to pin jumper
 (c) Wolfgang Kufer

RS232 USB	
pendcc	
09.12.2007 22:43:48	
Sheet: 5/5	