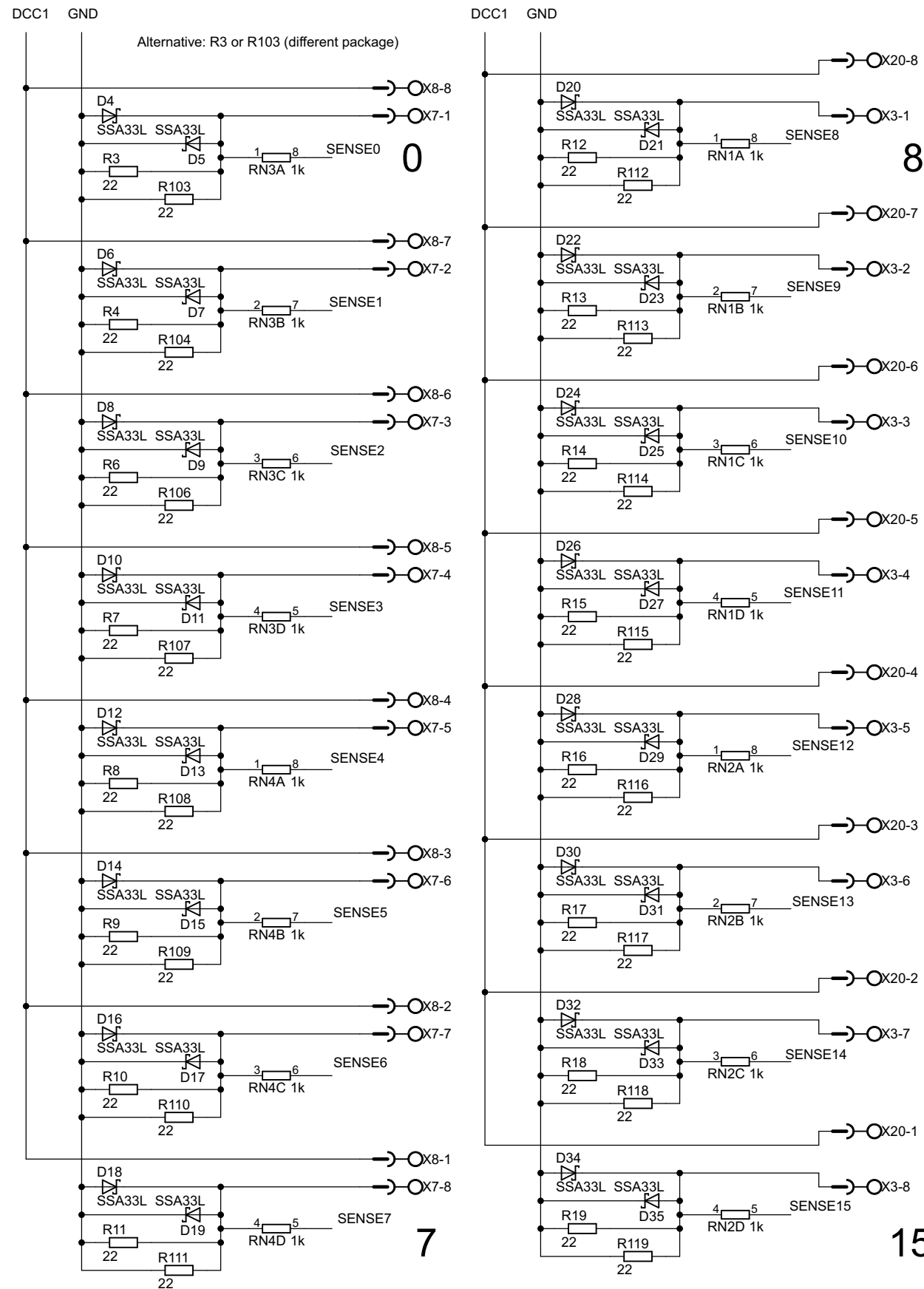


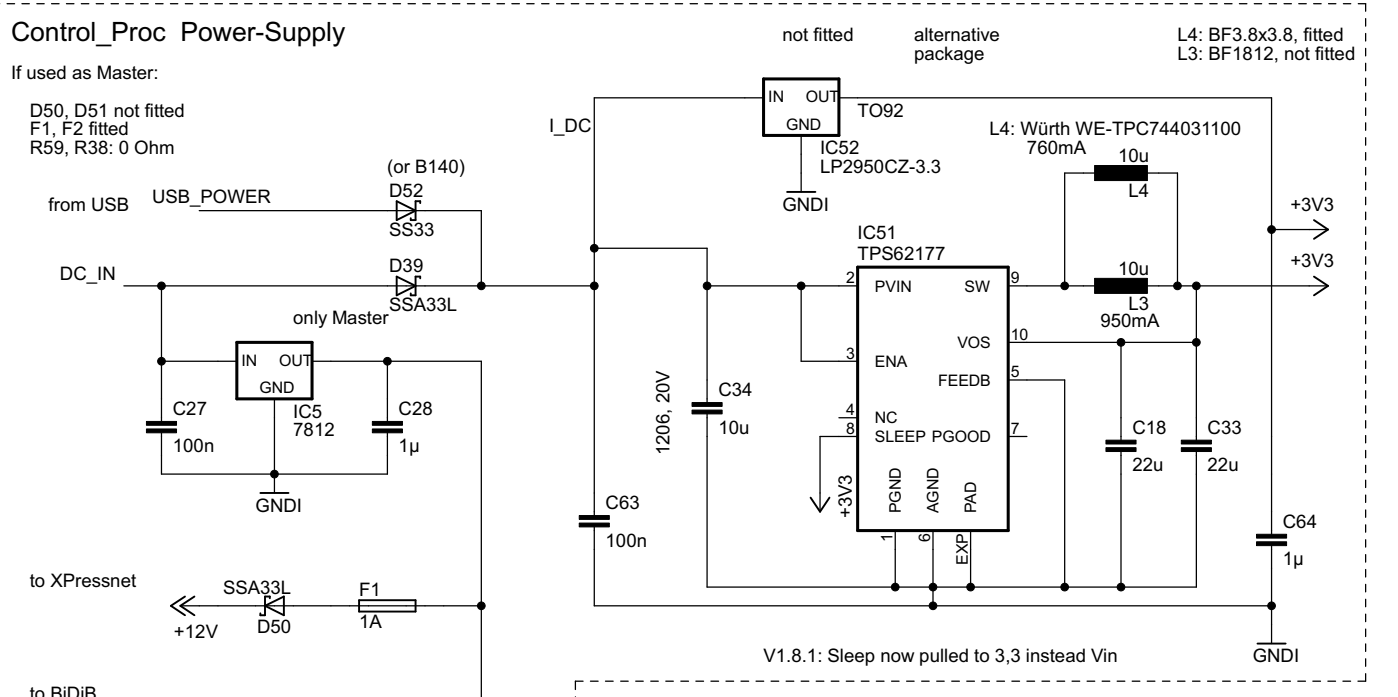
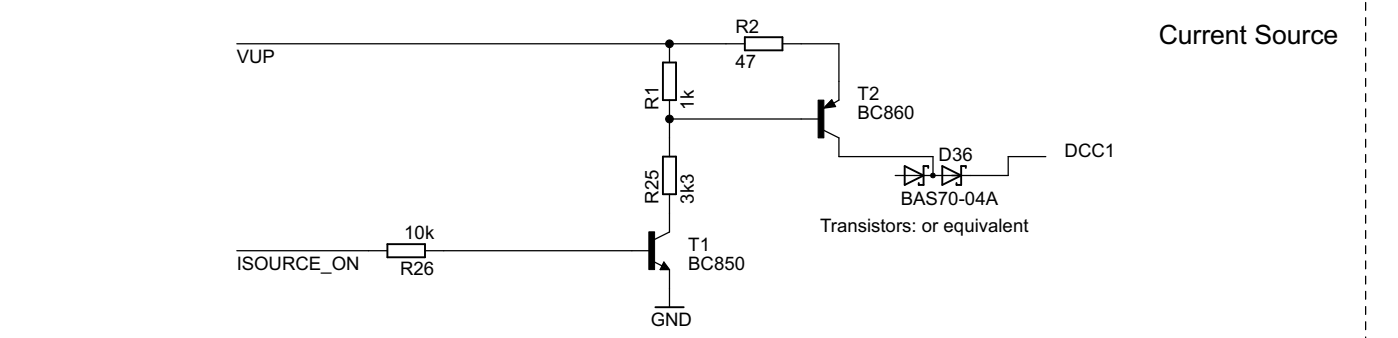
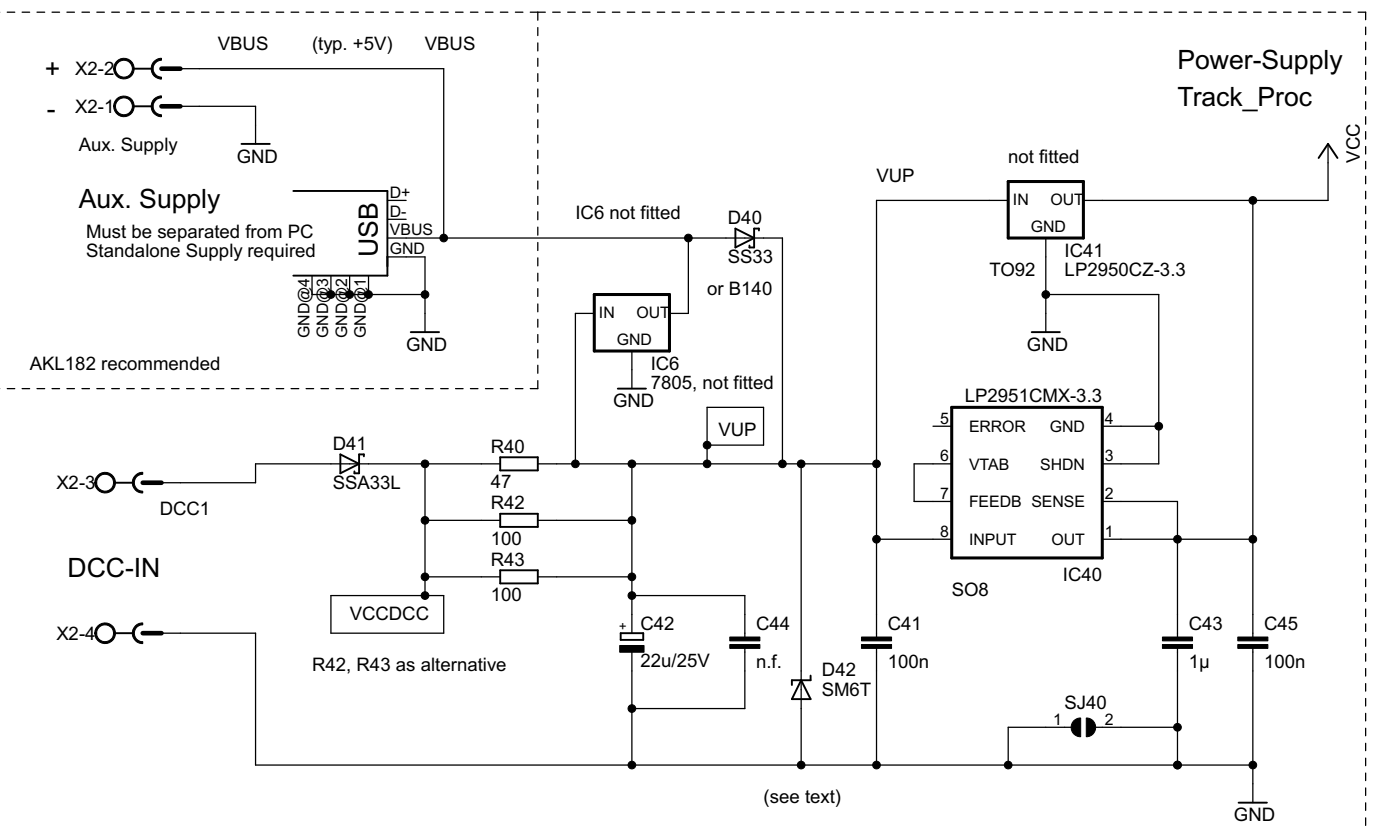
Track, Sensors, Power

Note: for railcom compliance 5.6 ohms is required



use only SMD, THT-Resistors are not fitted

V1.6: 29.01.2012 swapped connectors to RIA Plug



ENTWICKLER: Kufer	DATEINAME: BiDiB_GBM_Boost_1.9.1
ZEICHNER:	Last mod: 05.07.2016 13:33:22
AUFTR.-NR.:	Blatt: 2/4
GER.-NR.:	

