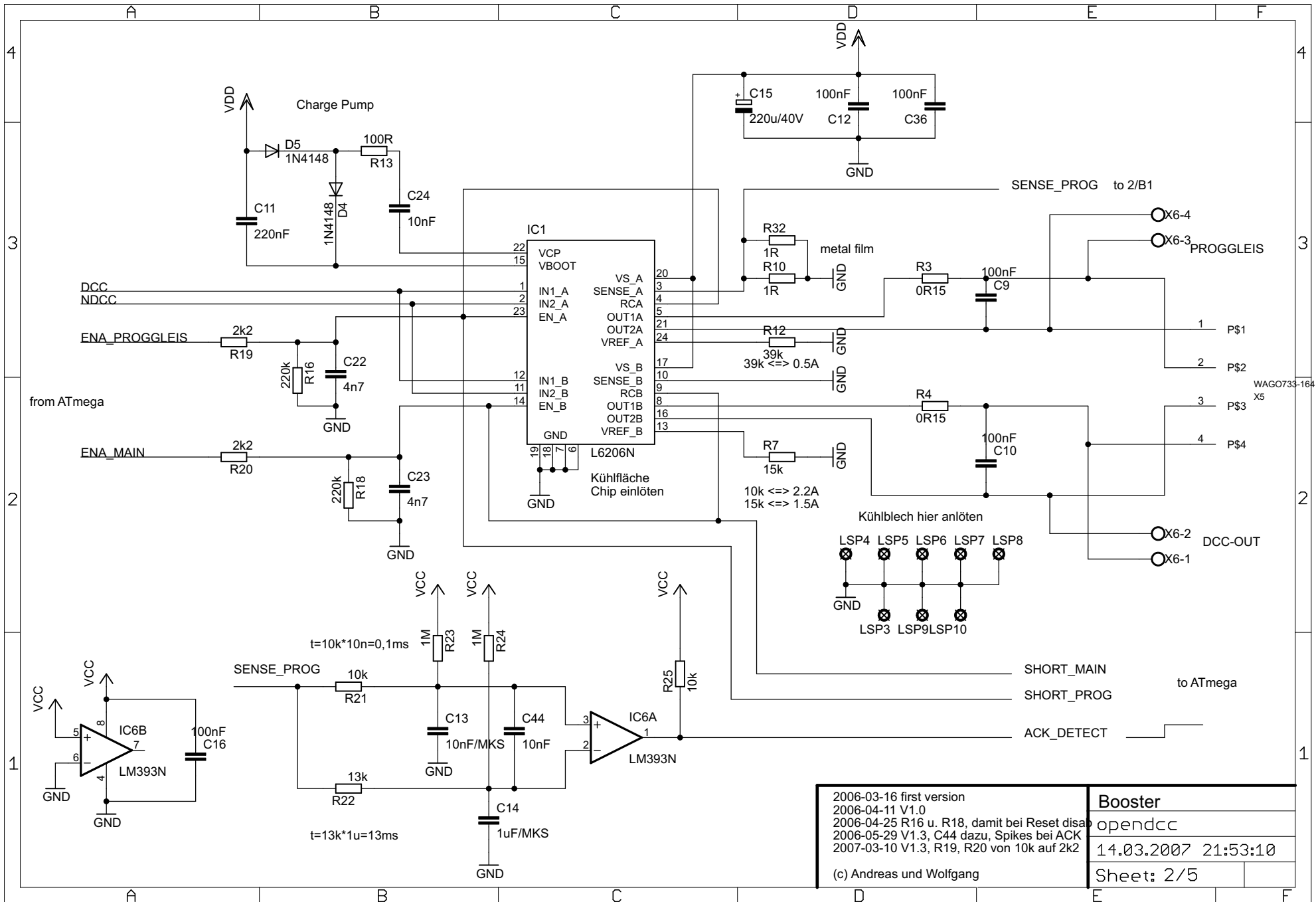


Mode:	IBOX	DMX	S88	td.
JP1		X		X
JP2			X	X

2006-04-11 V1.0
 2006-04-16 added CTS, RTS; USB-Support
 2006-04-23 V1.2 FT232RL Chip
 2006-04-25 Added ISP and Resetchip
 2006-05-15 Change C4-C5 -> 18pF
 (c) Andreas Lang und Wolfgang Kufer

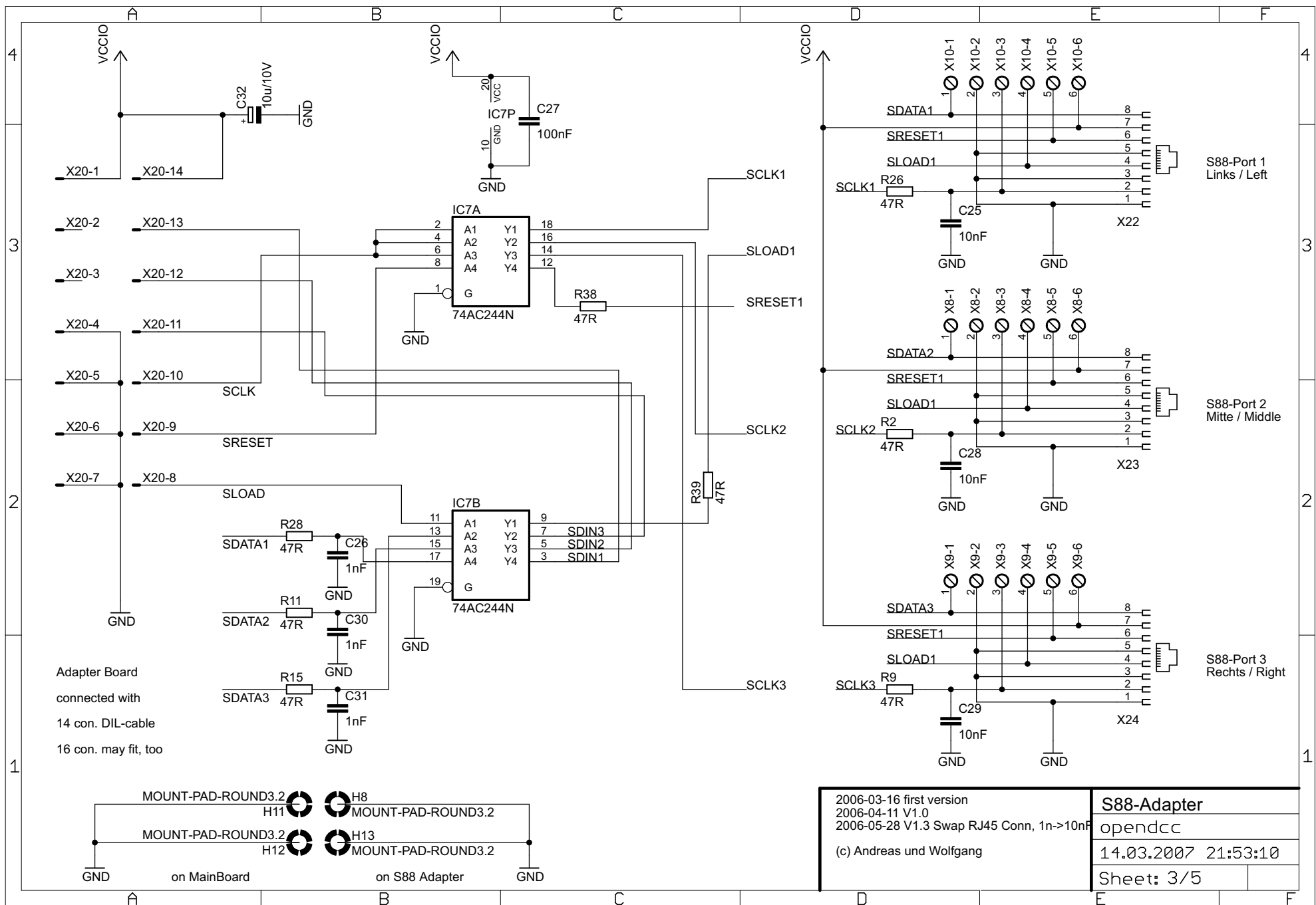
Prozessor
 opendcc
 14.03.2007 21:53:10
 Sheet: 1/5

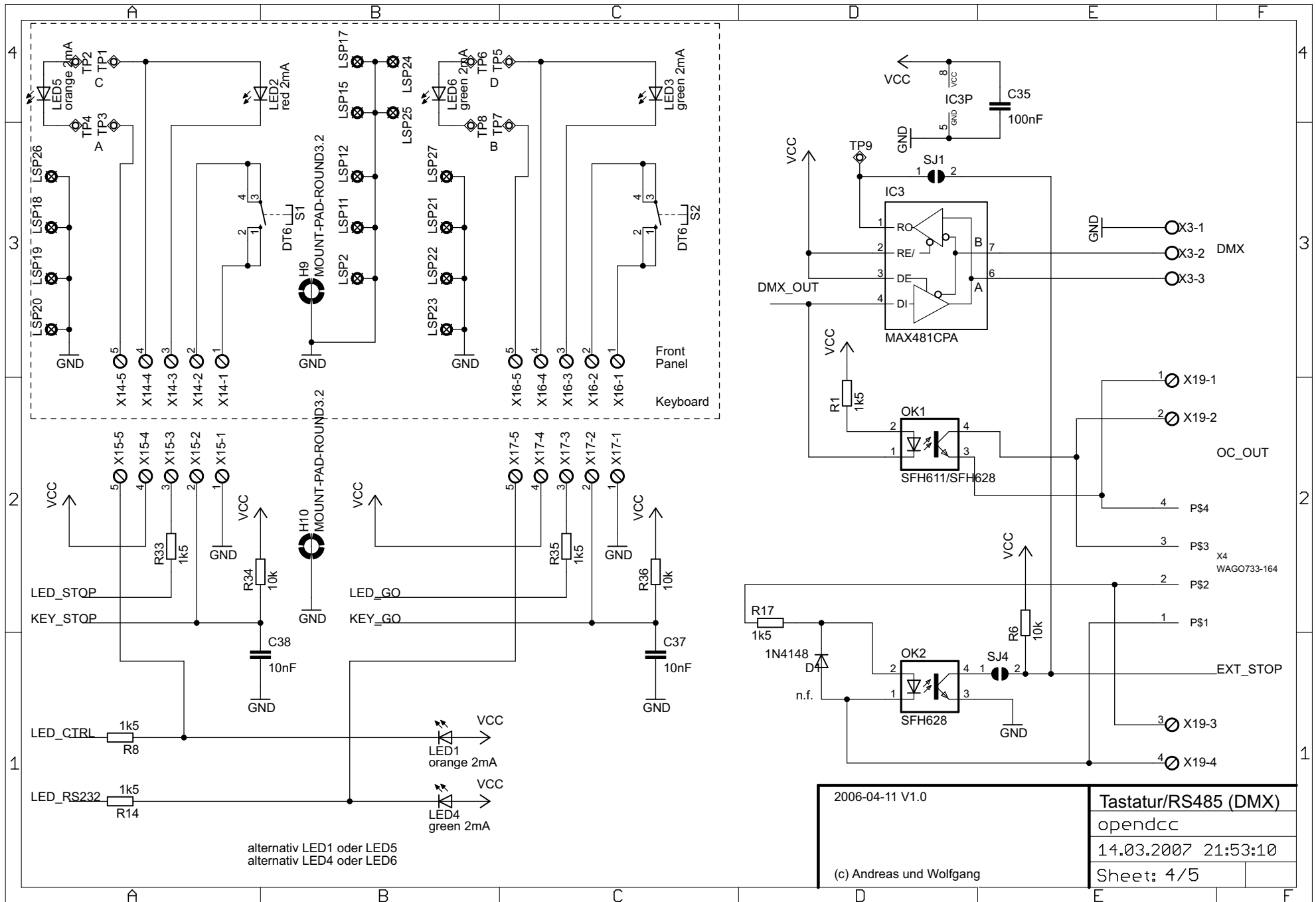
see at www.lancos.com



2006-03-16 first version 2006-04-11 V1.0 2006-04-25 R16 u. R18, damit bei Reset disa 2006-05-29 V1.3, C44 dazu, Spikes bei ACK 2007-03-10 V1.3, R19, R20 von 10k auf 2k2	Booster opendcc 14.03.2007 21:53:10 Sheet: 2/5
--	--

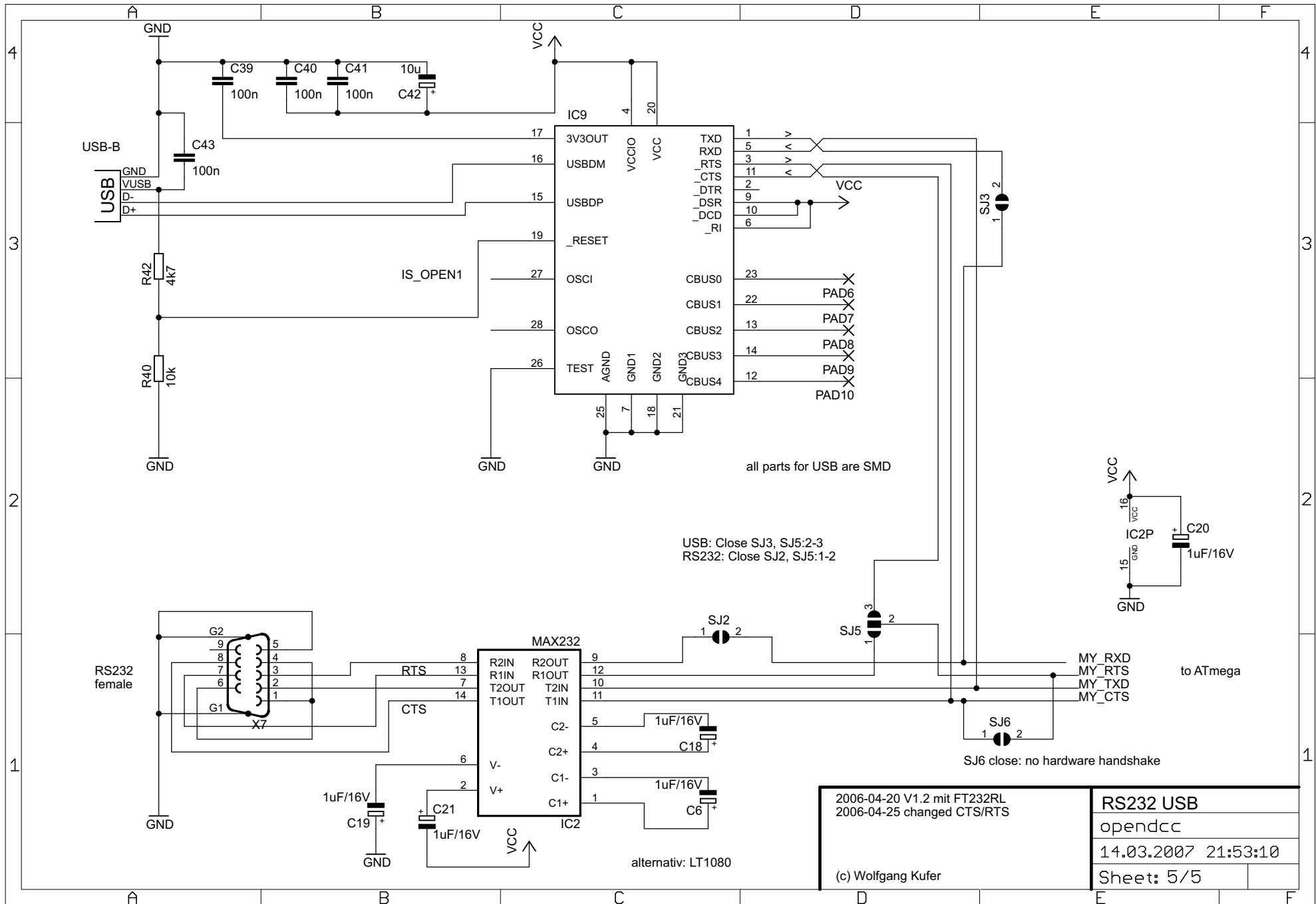
(c) Andreas und Wolfgang





2006-04-11 V1.0
 (c) Andreas und Wolfgang

Tastatur/RS485 (DMX)
 opendcc
 14.03.2007 21:53:10
 Sheet: 4/5



2006-04-20 V1.2 mit FT232RL
 2006-04-25 changed CTS/RTS
 (c) Wolfgang Kufer

RS232 USB	
opendcc	
14.03.2007 21:53:10	
Sheet: 5/5	